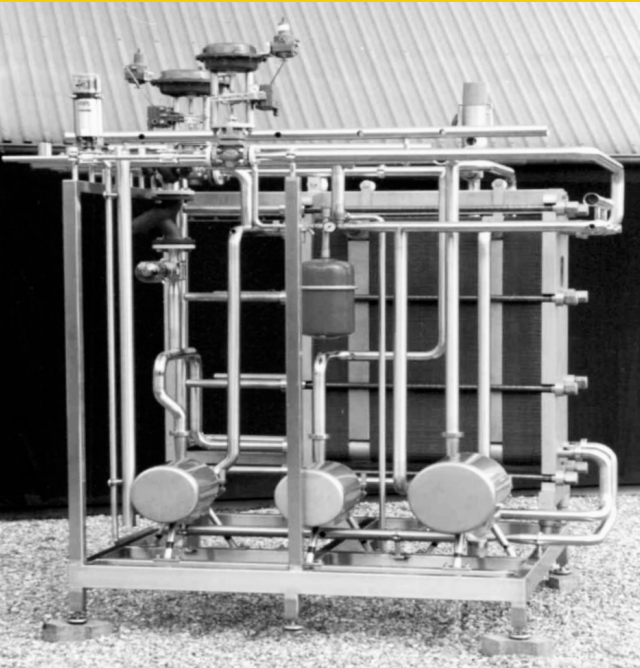




GD Precooler Unit



Description

The continuous remelt unit is delivered with either a Plate Heat Exchanger or a Shell & Tube Heat Exchanger.

The unit is complete with hot water make-up and circulation pump. All motors and electrical devices are wash-down enclosure.

Transmitters and valves are pre-piped and pre-wired to a local mounted junction box. All units are delivered as a Plug-&-Play concept.

Application

The GD Precooler Unit is designed for removal of heat calories from the passing product through the plate heat exchanger.

Precooling is to enhance further conditions before the crystallization process.

Materials

Product contacting parts, including the plates in the PHE for product, are made of stainless steel AISI 316.

Options

For products containing salt, less than 1% in the emulsion, SMO is recommended as PHE plate material. For products containing more than 1% salt in the emulsion, titanium is recommended as PHE plate material. For improved steam return we can, on customer request, include a condensate pump on the unit.

Integration

The free place at one side allows for fast and simple maintenance at the PHE.

The PC-Unit is designed for shortening, table, puff pastry and low fat margarine. Its nominal capacity depends on the product application.

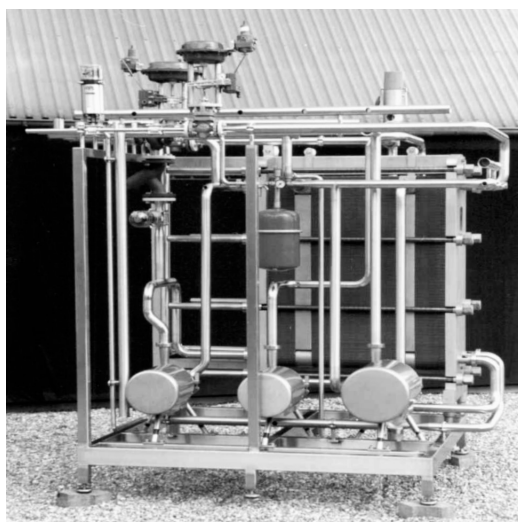


GD Precooler Unit

Technical specifications


GD PC UNIT	GDPC-1000	GDPC-2000	GDPC-3000	GDPC-5000	GDPC-10000	GDPC-15000	GDPC-20000
NOMINAL CAPACITY - PUFF PASTRY MARGARINE [LBS/H]	700	1,400	2,100	3,500	7,000	10,500	14,000
NOMINAL CAPACITY - TABLE MARGARINE [LBS/H]	1,000	880	3,000	4,500	6,500	10,800	11,800
NOMINAL CAPACITY SHORTENING [LBS/H]	1,500	3,000	4,500	7,500	15,000	22,500	30,000
MAX. WORKING PRESSURE [PSI]	150	150	150	150	150	150	150
WATER FLOW AT 50 PSI [GPM]	70	70	80	80	90	100	100
WATER CIRCULATION PUMP [HP]	1	1.5	1.5	2.0	2.5	3.0	3.0
PRODUCT PIPE IN-/ OUTLET [INCH]	1	1.5	1.5	1.5	2.0	2.0	2.5
FLOW RATE CIP [GPM]	2	5	11	15	21	33	46
PRESSURE DROP CIP [PSI]	8	8	8	10	10	12	12
DIMENSION WxLxH [INCH]*	35x65x65	35x65x65	40x70x70	40x70x70	40x70x70	40x80x80	40x80x80
MACHINE WEIGHT [LBS] *	800	900	1,000	1,200	1,400	1,600	2,500

* APPROXIMATELY



CONTACTS

GD Process Design, LLC

 N76 W30500 County Road V v
Hartland, WI 53029



Ph: 262-361-4080
Fax: 262-966-0312

sales@gdprocessdesign.com
www.gdprocessdesign.com