



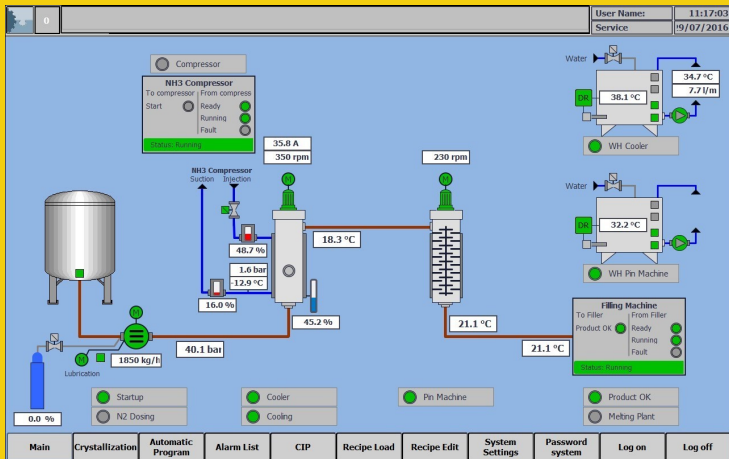
GD Process Control System

Description

The GD Process Control System is designed to control, record and document important parameters regarding the process.

The GD Process Control System helps create a consistent process environment to ensure that the product is manufactured in the same way every time. When the process variables have been fine-tuned for optimum results, the end product will always have the same quality.

Production can easily be changed by altering a recipe or entering new production alternatives rather than reprogramming. Monitoring and controlling the system can be done from one or several operating stations for maximum flexibility. GD Process Control System has the flexibility to be either a standalone or a client-server solution. In the client-server solution the process can be monitored from various locations, and connections can be made through a local network and/or internet.



Easy To Use

The fully automatic production program ensures easy handling when starting, running and ending the production. Mimic diagrams are included to give a fast and easy overview of the system. Icons resemble areas of the actual process with tanks, pipes, valves, pumps and other processing equipment.

Application

- Butter/dairy/fats and oils production process
- Batching, mixing
- CIP

Date:	29/07/2016 09:47:42
Recipe No:	4
Recipe Name:	Recipe 4
User Name:	

	29/07/2016 09:46:14	29/07/2016 09:46:30	29/07/2016 09:46:45	29/07/2016 09:47:00
Setup No.	1	1	1	1
N2 Dosing	14.3 %	14.3 %	14.3 %	14.3 %
High Pressure Pump:				
Start No.	1	1	1	1
Speed	1850 kg/h	1850 kg/h	1850 kg/h	1850 kg/h
Load	34.8 A	34.8 A	34.8 A	34.8 A
Pressure	40.1 bar	40.1 bar	40.1 bar	40.1

GD Process Control System

Technical specifications

Recipe Handling

Storing of batch and production parameters for easy/quick production repeat.

Reports

- Production reports
- Batch reports
- CIP Reports – generated automatically

Recipe Edit

Recipe No: 1 Recipe Name: Recipe 1

Next free Recipe Number: 5 No of free recipes: 94 Fetch

Recipe Valid: Recipe Saved:

Buttons: New, Load, Save, Save as, Delete

Setup No: 1 Setup 1: Cooler - Pin Machine Setup 2: Cooler

High Pressure Pump:

Start No: 1 Speed: 1550 kg/h

Cooler:

Start No: 2 Speed: 235 rpm NH3: -10.0 °C Product: 14.5 °C

Water Heater: 38.0 °C

Pin Machine:

Start No: 3 Speed: 225 rpm Temperature: 16.0 °C

Water Heater: 32.0 °C

Filling Machine:

Filling TE: 17.0 °C Hysteresis +: 1.0 °C Hysteresis -: 1.5 °C

11:30:31 29/07/2016 A 057: Fuse F1162 Tripped User Name: 11:35:35
 11:30:29 29/07/2016 A 056: Fuse F1151 Tripped Service: 9/07/2016

Recipe No: 4 Line Capacity: HPP: 1850 kg/h

Recipe Name: Recipe 4

Machine:	Product SP [°C]	PV [°C]	NH3 SP [°C]	PV [°C]	Speed	Current [Amp]	Pressure [Bar]	Volume [L]
High Pressure Pump:					1850 kg/h	34.8	40.1	
N2 Dosing:	15.0 %	14.3 %						
Cooler:					350 rpm	35.8		
Cooling:	22.0	18.3	-13.0	-12.9			1.6	
Water Heater:	38.0	38.1						
Pin Machine:	17.0	21.1			230 rpm	0.0		
Water Heater:	32.0	32.2						
Product OK:	22.5	21.1						

Startup Settings:

Empty Line: Same Product: Different Product:

Conditions: OK

Commands:

Start Pause Cooling Step +1 Accept Start Filling Stop Filling Stop Shut Down

Plant Status: Production Active for: 000:00:21 [H:M:S]

Current Step: 120 Running Coolers + Activating Cooling SP: 5.0 PV: 0.0 Unit: sec

Previous Step: 110 Circulation Product + Running Coolers SP: 22.5 PV: 21.1 Unit: °C

Main Crystallization Automatic Program Alarm List CIP Recipe Load Recipe Edit System Settings Password system Log on Log off

Graphic Display

The graphic displays give the user an immediate and precise overview of the process, due to the color-animated items.

All relevant values and process states are presented on the screen. All operations to the process can be performed directly from the screen.



CONTACTS

GD Process Design, LLC

N76 W30500 County Road V v
Hartland, WI 53029



Ph: 262-361-4080
Fax: 262-966-0312

sales@gdprocessdesign.com
www.gdprocessdesign.com