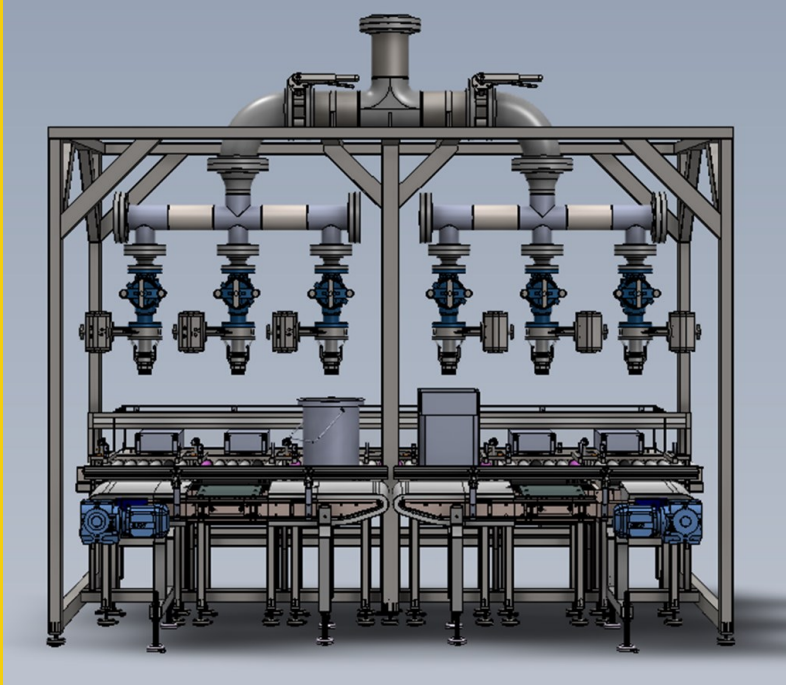




## GDPD 3+3 Bulk Weigh Filler



### Description

The GD Process Design 3+3 Bulk Filler is designed to automate the bulk filling of Industrial Products. By using a Flip Flop filling method we are able to accomplish a smooth continuous filling sequence.

The purpose of the machine is to allow for continuous reliable bulk filling with modern controls for ease of use, accurate reporting, and factory integration.

### Application

The GDPD 3+3 Bulk Filler has been designed for and proven in the Drywall Mud Industry. Due to the high level of adjustability to the conveying and filling sequence, the filler can be adapted to suit many industries.

### Materials

The Main Frame, Conveyors, and weigh platforms are constructed of Stainless Steel. Stainless Steel filling Manifold is available by request.

### Options

- Fine Fill (Double Acting Fill Control)
- Stainless Steel Manifold for abrasive or sanitary products
- Inline Product Strainers

### Integration

The AB FactoryTalk powered SCADA control system allows for easy pairing and integration with upstream processes and surrounding packaging equipment.



# GDPD 3+3 Bulk Weigh Filler

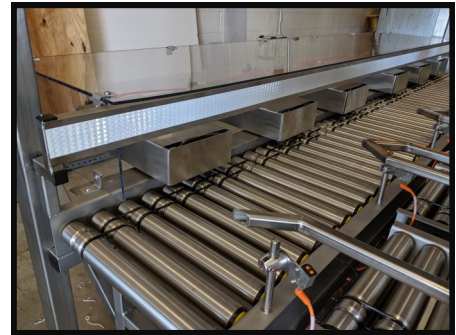
## Technical specifications

### Principles of Operation

The 3+3 Inline filling principle allows for easy integration into an existing or newly acquired automated packaging line. The 1 lane in, 1 lane out design eliminates the need for additional box handling on the infeed and outfeed of the machine.

#### Infeed Section:

The infeed section of the machine will accumulate and maintain a collection of 6 empty cases and stage them until they are ready to be pushed onto the weigh scale platforms by the pneumatic push arms. Once the arms retract, the conveyor will automatically call for more boxes and stage accordingly.



**\*\*Infeed Conveyor\*\***

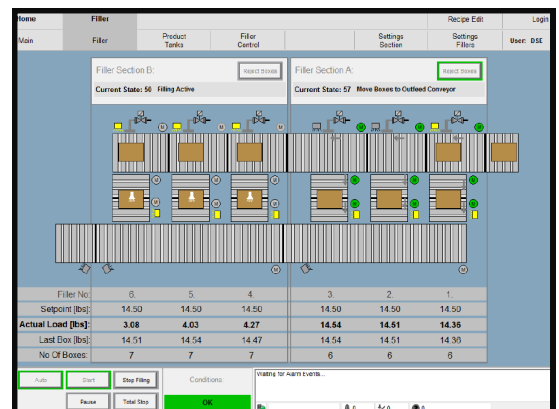
#### Filling Section:

Filling occurs on a pressure sensitive powered roller scale. Once the target weight has been achieved, the scale will convey the case off of the scale and onto the discharge conveyor.

#### Controls:

The PLC is controlled by a 24" Touch Panel PC mounted on the face of the MCC cabinet. Our SCADA control system allows for easy control and monitoring of the filler as well as the upstream process and product supply. Along with supply pump speed control, we are also able to manage multiple supply tanks. The built in Hard drive also allows for storage and easy access to historical data such as case count and accuracy trends.

Catagory	TECHNICAL DATA
Rated Capacity [Case/Minute]	18-20
Filling Heads	6
Air Pressure Requirement [psi]	100
Product Inlet 1x	6"
Product Outlets 6x	2"
DIMENSION LxWxH [INCH]*	115x60x145
Container Type	Pail and Box



**\*\*Control Panel Home Screen\*\***



### CONTACTS

GD Process Design, LLC

N76 W30500 County Road V v  
Hartland, WI 53029

Ph: 262-361-4080

Fax: 262-966-0312

sales@gdprocessdesign.com

www.gdprocessdesign.com